

Mr. Robot Characters

Character	Information
 <p>Elliot Alderson</p>	<p>Major or Minor Character? Major</p> <p>Stereotype? Potentially the shy/ awkward guy trope (although the reason for his these things are explained, through his mental health)</p> <p>Characteristics?</p> <ul style="list-style-type: none">• Paranoid• Lonely• Complex/ intelligent• has a sense of hopelessness <p>Contribution to narrative?</p> <ul style="list-style-type: none">• The perspective of the episode only focuses on what Elliot sees (main character) - doesn't cut to other characters unless Elliot is in the scene (also Elliot narrates a lot about what he's thinking and talks to us through his 'imaginary friend')
 <p>Angela Moss</p>	<p>Major or Minor Character? Major - Elliot's childhood friend</p> <p>Stereotype? The 'head-screwed on' friend of Elliot's - cares about Elliot, but can't always be around because she has a social life of her own.</p> <p>Characteristics?</p> <ul style="list-style-type: none">• Supportive - Seen through her constant support for Elliot (offers to hang out, comforts him, trusts him)• Temperamental <p>Contribution to narrative?</p> <ul style="list-style-type: none">• Calls Elliot to inform him the All-Safe has been hacked (kicks off Elliot's association with fsociety)



Tyrell Wellick

Major or Minor Character?

Major

Stereotype?

Acts as a henchman to Colby, but one of the backstabbing kind it seems (as in he seems very detached to Colby being his higher-up)

Characteristics?

- Well-mannered
- Cryptic/ mysterious - 'an executive running Linux'

Contribution to narrative?

- Earmarks Elliot - he seemingly knows what Elliot is going to do (hence the cliffhanger at the end of the pilot, where he drags Elliot into E Corp Headquarters).

Major or Minor Character?

Major

Stereotype?

A ignorant, big corporate fat cat - "even though he's the head technology guy at one of the biggest companies in the world, he owns a Blackberry"

Characteristics?

- Ignorant
- Unworthy of his achievement (see quote above)
- Has an apathetic attitude
- Seems to be sexist (has Elliot + Gideon go through the E Corp mishap, rather than Angela).

Contribution to narrative?

- The one who's being targeted for blackmail by fsociety - the villain of the pilot



Terry Colby

Major or Minor Character?



Darlene Alderson

Minor

Stereotype?

Not really - very strong feminist character archetype

Characteristics?

- Rebellious/ anti-conformative to society
- Tough (emotionally - hard shell)
- Apathetic

Contribution to narrative?

- Acts as second in command to Mr. Robot
- Checks up on Elliot to see if he is loyal enough to fully perform in fsociety missions

Major or Minor Character?

Minor

Stereotype?

Stressed and underprepared head of the business - company always getting it's sponsors get hacked

Characteristics?

- Overwhelmed
- Tense
- Self-absorbed

Contribution to narrative?

- Apart from getting Elliot to the terminals to relocate E Corp's data, he serves no other purpose than being the boss of All-Safe



Gideon Goddard

Major or Minor Character?



Llyod Chung

Minor

Stereotype?

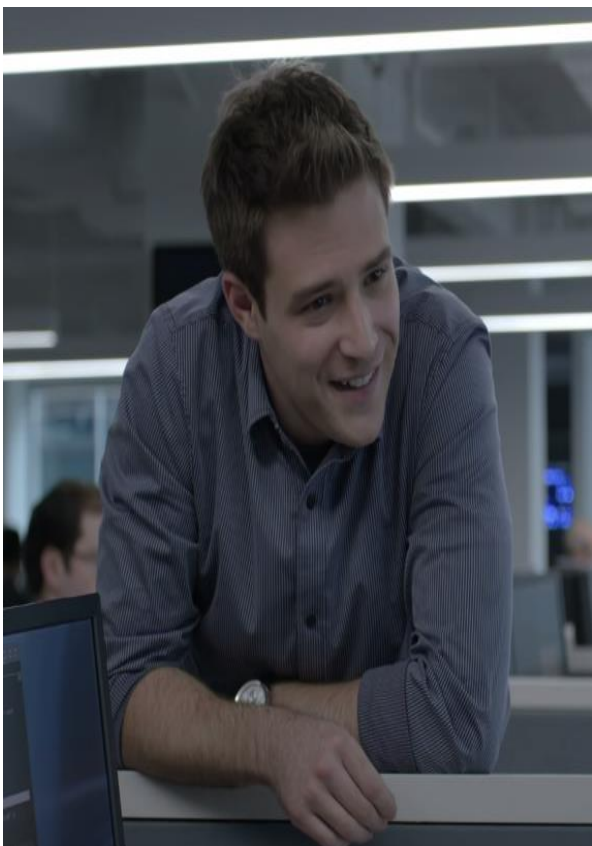
Token asian character - although he is out done by Elliot in the DDoS attack (stereotype of asians being the smartest race doesn't apply here)

Characteristics?

- Intelligent
- Perverted

Contribution to narrative?

- Elliot's (somewhat) workplace friend
- Helps try to stop DDoS attack



Ollie Parker

Major or Minor Character?

Minor

Stereotype?

The 'unlikeable' boyfriend - tries too hard to impress Elliot

Characteristics?

- Whiney
- Try-hard
- Basic - likes general music like Maroon 5

Contribution to narrative?

- Angela's boyfriend
- Source of Elliot's hate about Angela's love life (has an infidelity with another girl)

Major or Minor Character?



Shayla Nico

Minor

Stereotype?

Off-the rails - drugs, sexually active, dress non-traditionally

Characteristics?

- Independent
- Promiscuous
- Lax
- Risky

Contribution to narrative?

- Elliot's love interest
- Elliot's drug dealer



Krista Gordon

Major or Minor Character?

Major

Stereotype?

Even though she is a psychiatrist, she isn't very good at her job (protagonist ignores their advice and keeps getting worse).

Characteristics?

- Professional - takes her profession seriously
- Beaten-down/ down on her luck

Contribution to narrative?

- Tries to help Elliot get better in terms of his mental wellbeing.

Major or Minor Character?



Michael Hansen

Minor

Stereotype?

The 'nice guy' who isn't a nice guy (cheats on Krista and is abusive towards a dog, who Elliot later adopts as Flipper).

Characteristics?

- Shifty
- Animal Abuser
- Impatient

Contribution to narrative?

- Act as love interest to Kirsta, who Elliot vows to protect - ends up being a mini villain in the pilot



Major or Minor Character?

Minor

Stereotype?

Token minorities, but more character development than Llyod

- Romero - black
- Trenton - Muslim
- Mobley - Arabic (american born)

Characteristics?

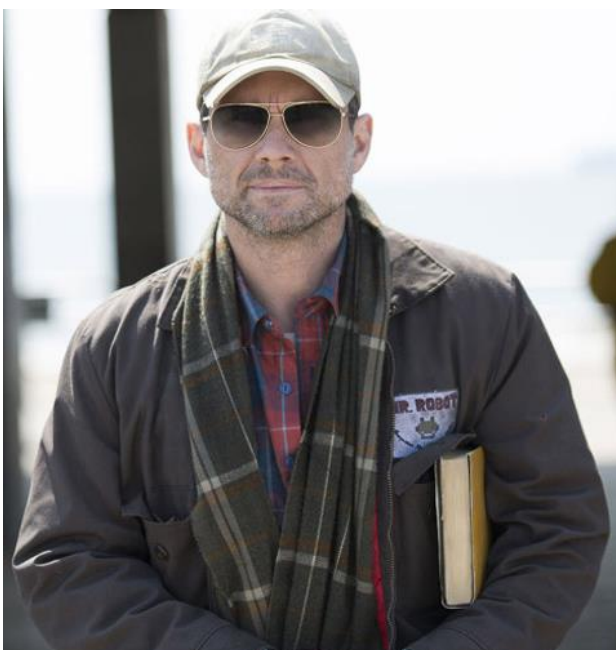
- Romero
 - Disgruntled
 - Pessimistic
 - Skeptical
- Trenton
 - Curious
 - Hopeful
 - Determined
- Mobley
 - Paranoid
 - Skeptical

Contribution to narrative?

- Followers and loyal to Mr. Robot - been selected for their hacking skills



Romero (top left), Trenton (bottom) +
Mobley (top right) - fsociety members/
hackers



Major or Minor Character?

Major (important as the show is named after him)

Stereotype?

Mysterious leader - goes only by allies

Characteristics?

- Ambitious
- Cryptic
- Confident

Contribution to narrative?

- Keeps tabs on Elliot - follows him around
- Has Elliot join fsociety
- Has Elliot blackmail Colby

Mr. Robot	
-----------	--

Opening Sequence: 6 mins 28 secs

Names of actors/ actress in the title (significance to the importance of the character):

- Rami Malek - Elliot
- Carly Chaikin - Darlene
- Portia Doubleday - Angela
- Martin Wallstrom - Tyrell
- Christian Slater - Mr. Robot (includes an *and)